

# Scholars GeoPortal & libraries as partners

---

Canadian Historical GIS Partnership Conference, June 2016

Search

Map (0)

Download

Login

?

☒ Data ☐ Place or address

Anywhere

Search

?

☒ Downloadable content only[Back To Results](#)

## Régions Agricoles, fichier des limites cartographiques du recensement de l'agriculture 2001

Add

Producer: Statistique Canada

Date published: 2002-10-01 (publication)

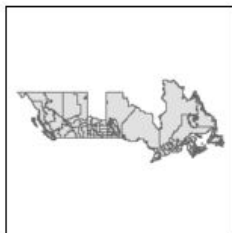
Type of data layer: Vector

Permalink [http://geo.scholarsportal.info/#r/details/\\_uri@=443080685](http://geo.scholarsportal.info/#r/details/_uri@=443080685)

Coordinate system: 4269 - "NAD83"

### Abstract:

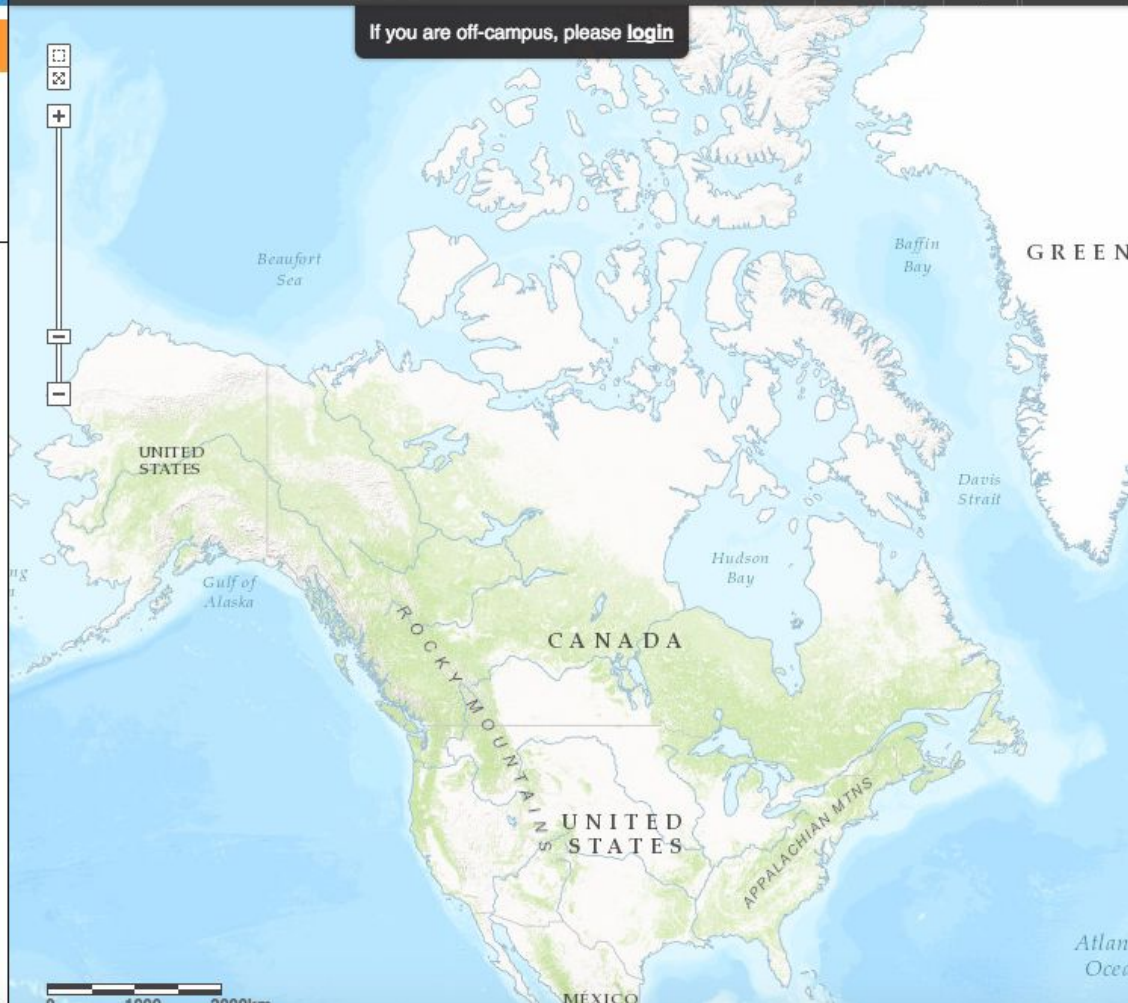
Les Fichiers des limites des régions agricoles de recensement de 2001 comprennent les limites de l'ensemble des 82 régions agricoles de recensement pour le Recensement de l'agriculture de 2001.



Les Fichiers des limites des régions agricoles de recensement de 2001 servent de charpente à la cartographie et à l'analyse spatiale.

Régions agricoles de recensement sont utilisées par le Recensement de l'agriculture pour diffuser les statistiques agricoles.

Ce service de carte vectorielle est renforcée à partir des données d'origine Format Arc Infos Interchange (E00), extrait de l'Initiative de démocratisation

If you are off-campus, please [login](#)

# Libraries

Map and data libraries across Canada provide:

- Physical and digital data collections
- Tools and software
- Standards
- Multidisciplinary support

CANADA 1 INCH TO 1 MILE

TOPOGRAPHIC MAP  
ONTARIO  
PITCH SHED



Published by the Department of the Interior  
Department of Technical Services, 1905  
Reprinted 1906

Reprinted by permission of the Department of the Interior  
Reprinted by permission of the Department of the Interior  
Reprinted by permission of the Department of the Interior

General Features	1000	2000	3000	4000	5000	6000	7000	8000	9000	10000
Water	Blue	Blue	Blue	Blue	Blue	Blue	Blue	Blue	Blue	Blue
Land	Green	Green	Green	Green	Green	Green	Green	Green	Green	Green
Vegetation	Green	Green	Green	Green	Green	Green	Green	Green	Green	Green
Buildings	Black	Black	Black	Black	Black	Black	Black	Black	Black	Black
Highways	Black	Black	Black	Black	Black	Black	Black	Black	Black	Black
Railroads	Black	Black	Black	Black	Black	Black	Black	Black	Black	Black
Canals	Black	Black	Black	Black	Black	Black	Black	Black	Black	Black
Other	Black	Black	Black	Black	Black	Black	Black	Black	Black	Black

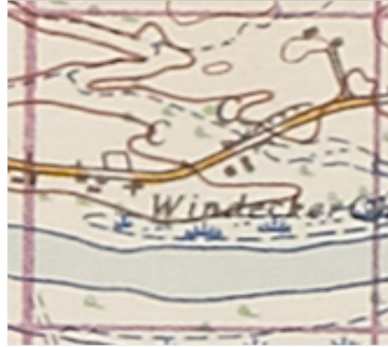
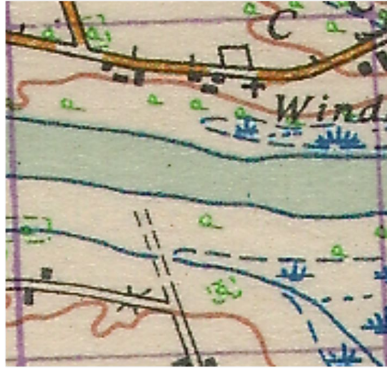


Color	Meaning
Blue	Water
Green	Land
Black	Buildings
Red	Highways
Yellow	Railroads
Purple	Canals
White	Other

General Features	1000	2000	3000	4000	5000	6000	7000	8000	9000	10000
Water	Blue	Blue	Blue	Blue	Blue	Blue	Blue	Blue	Blue	Blue
Land	Green	Green	Green	Green	Green	Green	Green	Green	Green	Green
Vegetation	Green	Green	Green	Green	Green	Green	Green	Green	Green	Green
Buildings	Black	Black	Black	Black	Black	Black	Black	Black	Black	Black
Highways	Black	Black	Black	Black	Black	Black	Black	Black	Black	Black
Railroads	Black	Black	Black	Black	Black	Black	Black	Black	Black	Black
Canals	Black	Black	Black	Black	Black	Black	Black	Black	Black	Black
Other	Black	Black	Black	Black	Black	Black	Black	Black	Black	Black

ONTARIO 4100-4500  
PITCH SHED

Reprinted by permission of the Department of the Interior



~1 cm









Search Map (2) Download (7) Login ?

Data Layers Map Annotations

Digital Raster Acquisition Project Eastern Ontario (DRAPE) - 2014 jpg2000 ?

Remove Zoom Details

☒ Digital Raster Acquisition Project Eastern Ontario (DRAPE) - 2014 jpg2000

1934 Air Photos of Niagara Region

Remove Zoom Details

☒ 1934 Air Photos of Niagara Region





Anywhere ▼

Search

## Downloads

Producer: Ontario Ministry of Natural Resources

Date published: 2008-01-05 (publication), 2014-04-28 (publication)

Type of data layer: Raster

Remove

Zoom

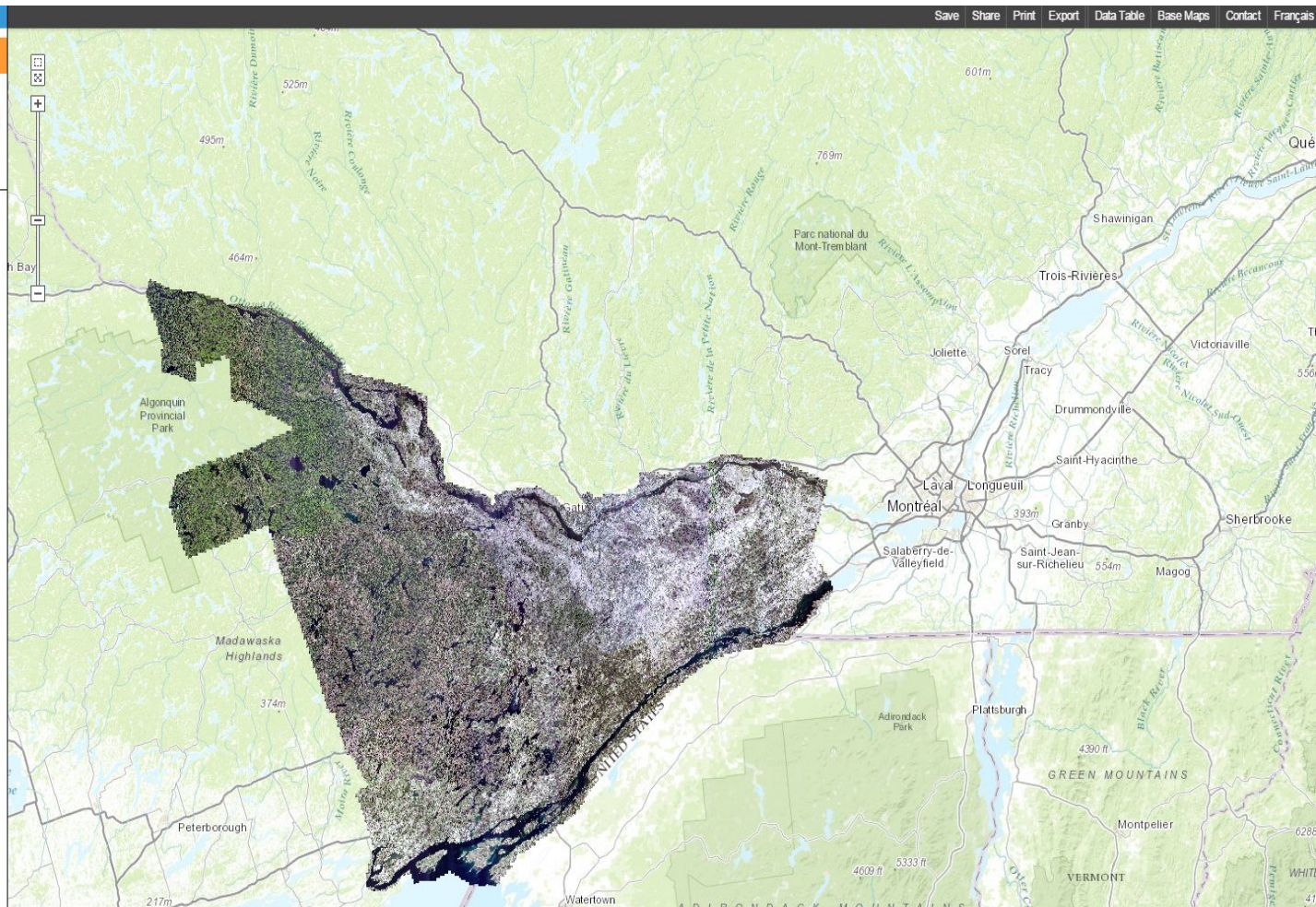
[Zoom](#)  
[Details](#)

Add D

5

10

Add D





# Research data

- Open science
- Data sharing
- Data management
- Geovisualization
- Software and formats
- Preservation and long term access



## SP Dataverse Network

[Create Account](#)[Log In](#)

### SPATIAL AND TEMPORAL PATTERNS OF NET CARBON EXCHANGE IN THE POLAR SEMI-DESERT VEGETATION TYPE ON MELVILLE ISLAND, NUNAVUT (2013)

hdl:10864/11799

Version: 5 – Released: Fri Jun 17 14:58:16 EDT 2016

#### CATALOGING INFORMATION

[Data & Analysis](#)[Comments \(0\)](#)[Versions](#)

If you use these data, please add the following citation to your scholarly references. [Why cite?](#)

#### Data Citation

Scott, Neal; Treitz, Paul; Buckley, Emma, 2013, "SPATIAL AND TEMPORAL PATTERNS OF NET CARBON EXCHANGE IN THE POLAR SEMI-DESERT VEGETATION TYPE ON MELVILLE ISLAND, NUNAVUT (2013)", <http://hdl.handle.net/10864/11799> Data Services, Queen's University Library [Distributor] V5 [Version]

**Citation Format** [Print](#)

#### Data Citation Details

Title	SPATIAL AND TEMPORAL PATTERNS OF NET CARBON EXCHANGE IN THE POLAR SEMI-DESERT VEGETATION TYPE ON MELVILLE ISLAND, NUNAVUT (2013)
Study Global ID	hdl:10864/11799
Authors	Scott, Neal (Queen's University. Department of Geography and Planning); Treitz, Paul (Queen's University. Department of Geography and Planning); Buckley, Emma (Queen's University. Department of Geography and Planning)
Producer	Neal Scott, Queen's University. Department of Geography and Planning; Paul Treitz, Queen's University. Department of Geography and Planning; Emma Buckley, Queen's University. Department of Geography and Planning



# Collaboration

- Ontario Council of University Libraries (OCUL)
- Scholars Portal
- CARL Portage Network
- Data Liberation Initiative (DLI), Statistics Canada
- GeoHistory Partnership
- GeoAlliance
- And others

Thank you!

Amber Leahey [amber@scholarsportal.info](mailto:amber@scholarsportal.info)